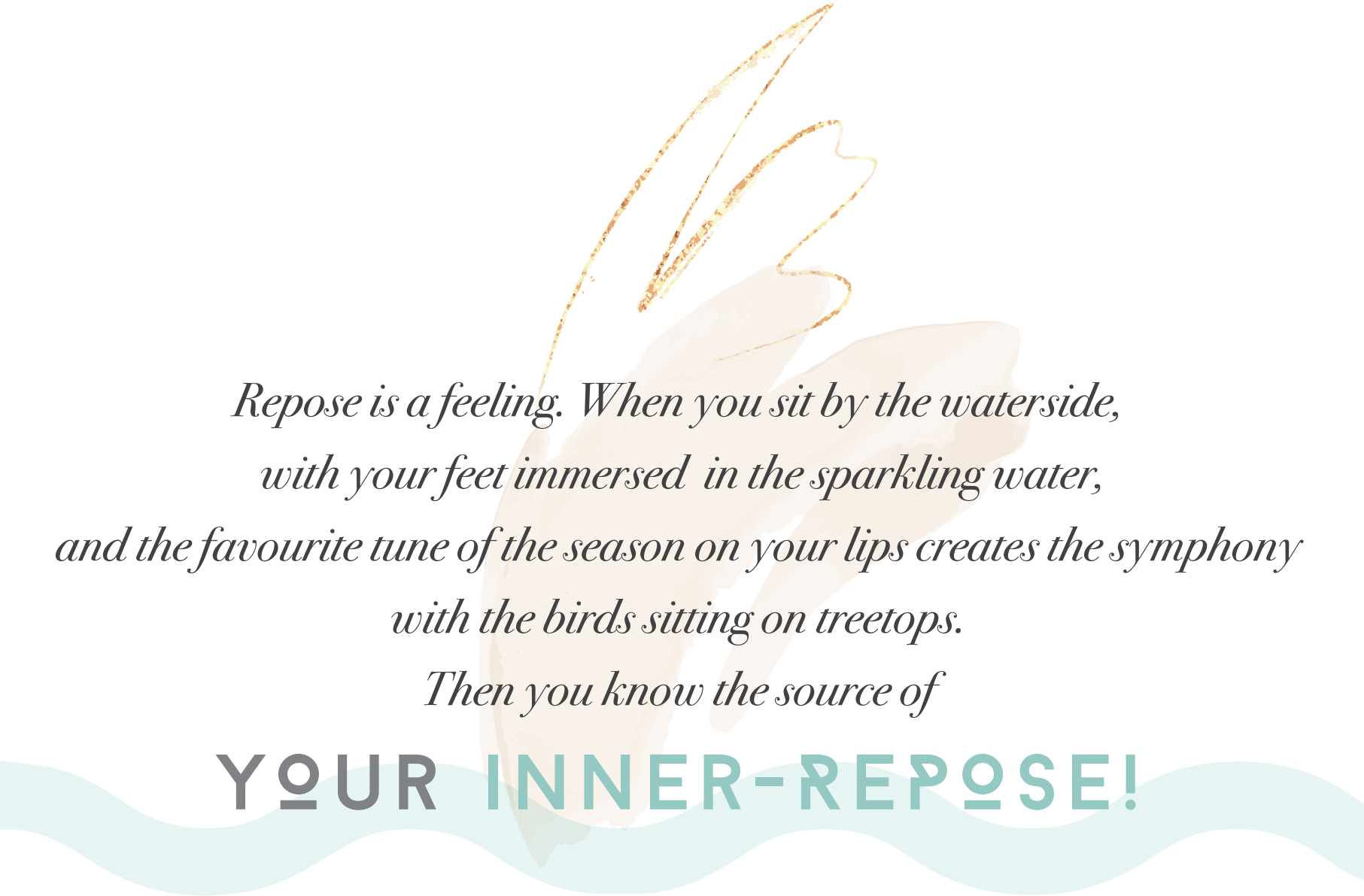




JEEVIKA

— LUXURY BY WATERSIDE —



*Repose is a feeling. When you sit by the waterside,
with your feet immersed in the sparkling water,
and the favourite tune of the season on your lips creates the symphony
with the birds sitting on treetops.
Then you know the source of*

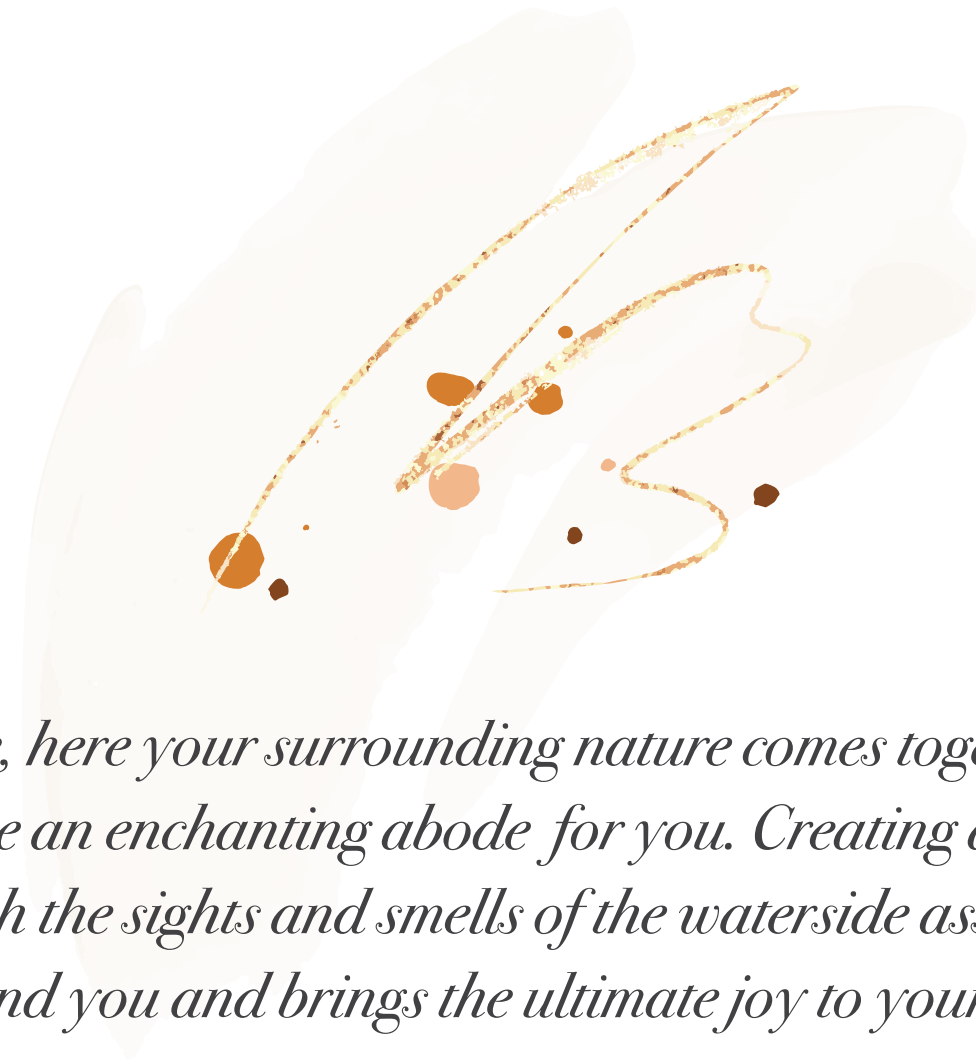
YOUR INNER-REPOSE!



AND YOU GLEAM AS YOUR

EXTERNAL REPOSE RADIATES





*See, here your surrounding nature comes together
to curate an enchanting abode for you. Creating a day full
of orchestra with the sights and smells of the waterside assure the calmness
around you and brings the ultimate joy to your home.*



JEEVIKA
— LUXURY BY WATERSIDE —



LIFE AS SERENE AS THE MORNING SKY

*There are homes to live. And then, there are
abodes at Jeevika that provide a sanctuary of a different lifestyle.
As you manoeuvre through eclectically designed living spaces dotting
the landscape, pause for a moment and get swayed by
the soothing water body within.*

2 Towers ~ G+24 ~ 128 Apartments

3, 4 & 5 BHK Air-conditioned Apartments

3-Sides-open Residences ~ All flats are South-open

More than 40% Waterbody



JEEVIKA

— LUXURY BY WATERSIDE —



Feel the flow of ceaseless luxury towering against the skyline



Luxury finds rest at
THE HOMES BY THE WATER

Every time we create a project, we try to put our best foot forward. Crafting every little aspect of the project with a keen eye for the details, we come up with projects that make people stand back and take notice. Two decades of experience and a will to reach heights higher than the ones we have reached before are what make us different.

Jeevika, Lake Town, has many feathers in its cap. A coveted location, a well-connected locality, a secured gated community with like-minded neighbours, and most importantly, it enjoys an exclusive water ecosystem that has almost vanished from settings that one sees now-a-days.

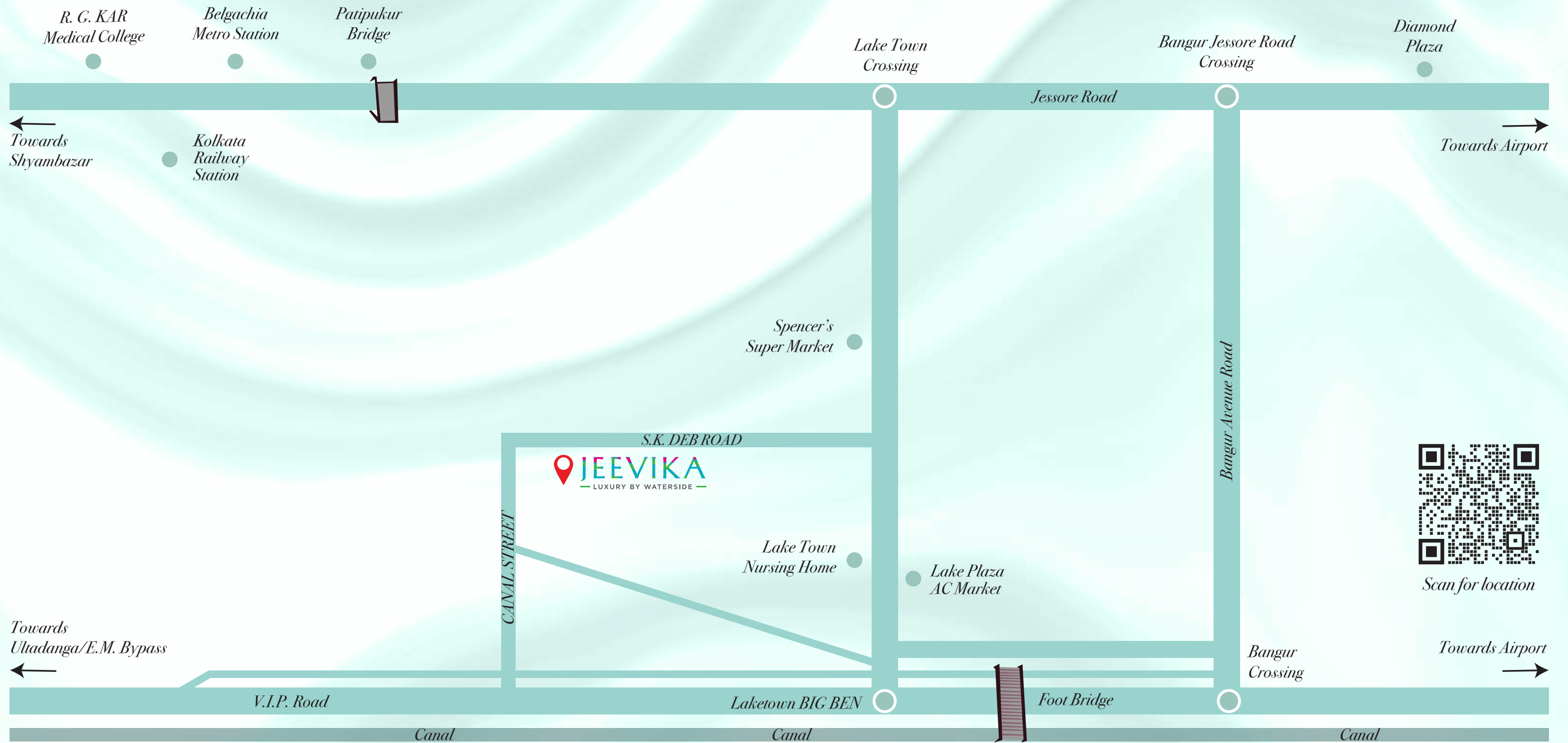
We wanted to bring to our clientele homes that would provide them with multiple amenities along with one of life's most important gifts—good health—for the air here is simply a class apart with the large waterbody that graces the project.

*Warm regards,
Team Auricas & Natural Group*



CONVENIENCE AS EASY AS IF YOU ARE FLYING

*Jeevika redefines connectivity.
Every important node is connected to this place
and can be covered in no time. Staying here means you
are staying at the heart of Kolkata.*



NEAREST LANDMARKS

2-minute walking distance from Laketown Big Ben | Opposite lane of Laketown Sharma’s Sweet Shop
Adjacent to Eastern Clinical Complex

LOCATION HIGHLIGHTS

COLLEGE

<i>Techno India University</i>	<i>7.0 km</i>
<i>Institute of Engineering & Management (IEM)</i>	<i>7.0 km</i>
<i>Amity University, Kolkata</i>	<i>9.0 km</i>
<i>St. Xavier’s University, New Town</i>	<i>9.5 km</i>
<i>Heritage Institute of Technology</i>	<i>10.0 km</i>

SCHOOL

<i>The Newtown School</i>	<i>9.1 km</i>
<i>La Martinière School</i>	<i>10.5 km</i>
<i>Delhi Public School Megacity</i>	<i>13.0 km</i>
<i>The Heritage School</i>	<i>13.3 km</i>

HOSPITALS

<i>Apollo Hospital</i>	<i>2.4 km</i>
<i>ILS Hospitals</i>	<i>4.9 km</i>
<i>Charnock Hospital</i>	<i>5.5 km</i>
<i>AMRI Hospital</i>	<i>5.9 km</i>

CONNECTIVITY

<i>Belgachia Metro Station</i>	<i>2.6 km</i>
<i>City Center Metro Station</i>	<i>4.1 km</i>
<i>Kolkata Railway Station</i>	<i>4.3 km</i>
<i>Sealdah Railway Station</i>	<i>7.3 km</i>
<i>Airport</i>	<i>8.0 km</i>
<i>Howrah Railway Station</i>	<i>10.3 km</i>

MALLS

<i>Diamond Plaza</i>	<i>2.4 km</i>
<i>Mani Square</i>	<i>3.4 km</i>
<i>City Center 1</i>	<i>4.1 km</i>
<i>City Center 2</i>	<i>7.2 km</i>

HOTELS AND RESTAURANTS

<i>Kouzina Mining</i>	<i>1.2 km</i>
<i>Mainland China</i>	<i>4.0 km</i>
<i>Hyatt Regency</i>	<i>4.3 km</i>
<i>JW Marriott Hotel</i>	<i>7.8 km</i>
<i>ITC Royal Bengal</i>	<i>8.1 km</i>
<i>ITC Sonar</i>	<i>8.1 km</i>

ATTRACTIONS

<i>Nicco Park</i>	<i>6.8 km</i>
<i>Aquatica</i>	<i>9.0 km</i>
<i>Eco Park</i>	<i>9.8 km</i>



Enter into your world of fine-living effortlessly through the main entrance



Escape to the aesthetics of fine luxury while you wait at the lift lobby

Artist's Impression



Water-abodes that invite
abundance of
WIND & SUNLIGHT

The city of joy has many landmark locations peppered all around it, but its life pulse can truly be felt every moment in North Kolkata. Merging the calm and gentle grace of the waterbody inside the premise with the elegant and modern architecture of the project was a dream come true.

In today's time, people rarely get to enjoy the peaceful charm and quiet indulgence that go hand in hand with the aquatic ecosystem that is ever-present and ever-growing by the homes. The homes, too, are designed to see the intricate dance of wind, water, and sunlight for a lifetime.

These water abodes will deliver a lifestyle that will keep you mesmerised forever!

MITUL SHUKLA
Architect & Landscape Consultant



SHAILY SHUKLA
Architect & Interior Designer

MASTER PLAN



LEGEND

1. Main Entrance Gate with Security Cabin 2. Arrival Plaza 3. Sculpture Point 4. Walkway 5. Green Lawn 6. Kids' Play Area
7. Amphitheatre 8. Multipurpose Games Court 9. Senior Seating 10. Reflexology Pathway 11. Stepped Planter 12. Feature Wall 13. Floated Seating
14. Floating Step 15. Driveway 16. Floating Joggers' Track 17. Green Island 18. Yoga Deck 19. Pond View Walkway
20. Temple 21. Fishing Deck 22. Peripheral Greenery 23. Services 24. Fitness Deck 25. Exit



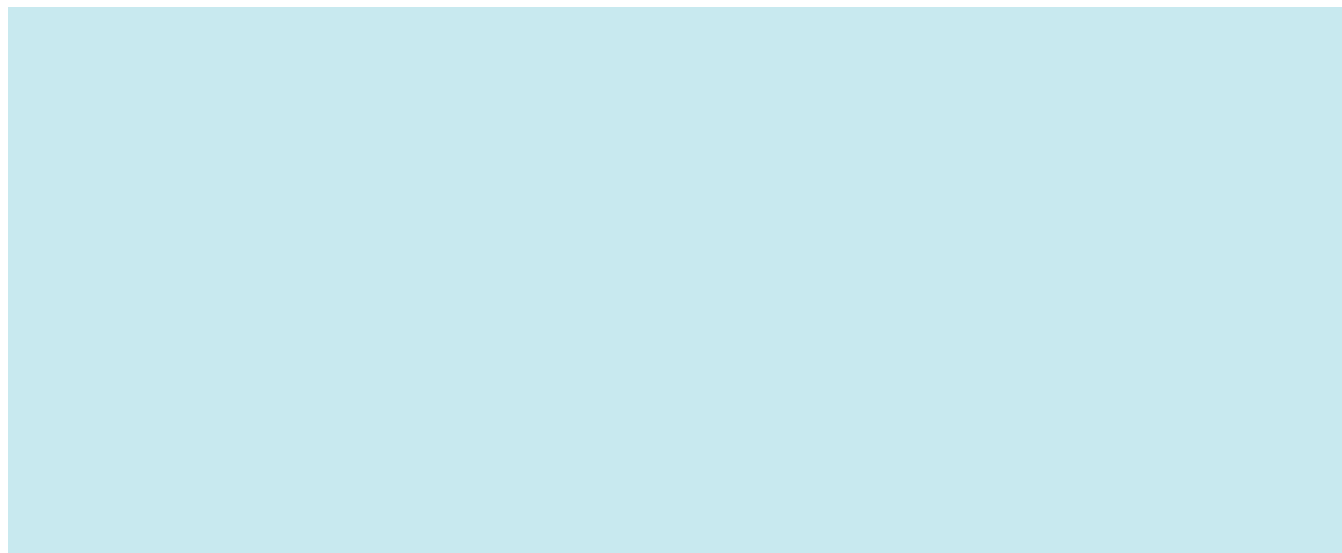
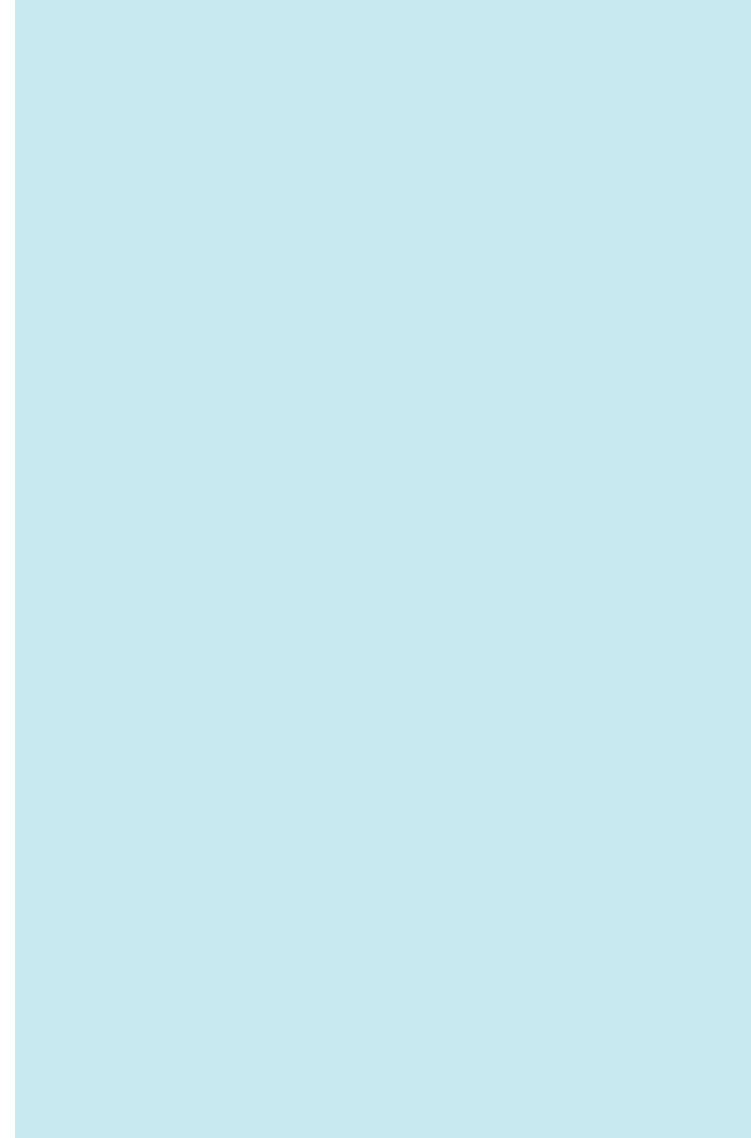
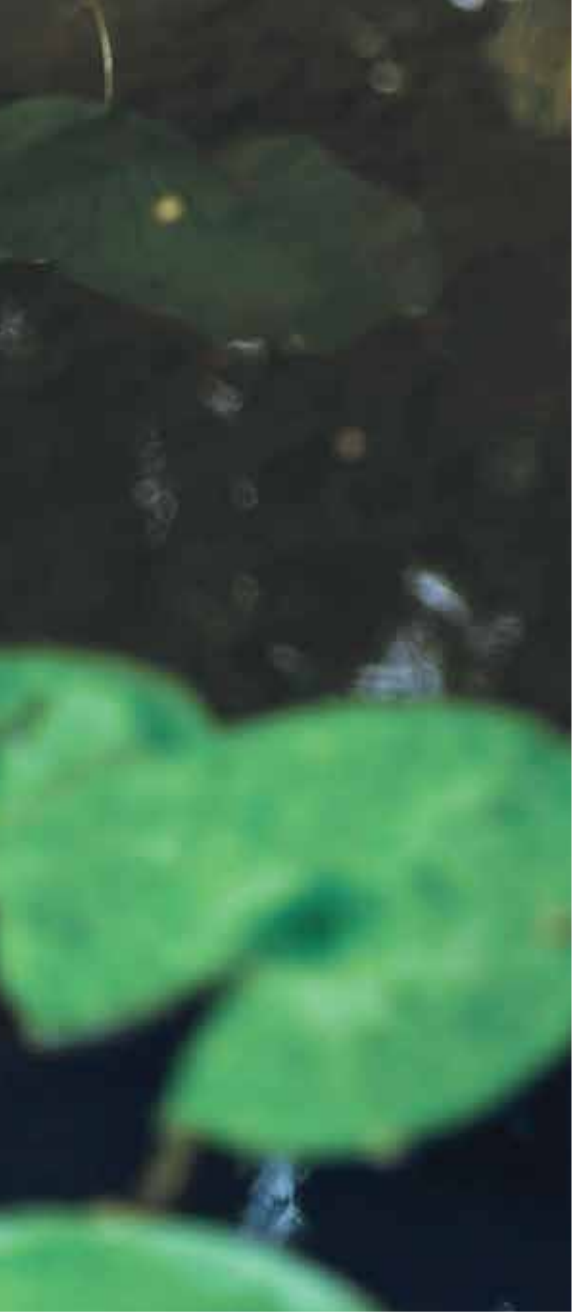
Not to scale



HERE
PEACE FINDS YOU
EASILY IN YOUR
WATERSIDE ABODE



*Gentle water breeze is now a big part of your life!
Your days will be set to relax, refresh, and revive your body,
mind and soul!*





Fishing Deck ~ *Fitness Zone* ~ *Water Sculpture* ~ *Waterside Pathway*
Floated Seating ~ *Floating Joggers' Track* ~ *Floating Step*



MINDFUL HABITS
YOUR NEW REALITY
AT YOUR WATER HOMES

*A luxury, unlike anything you have seen before,
awaits your homecoming.*

TRANQUILLITY FINDS ITS TRUE DEFINITION HERE

1

*Improves connections
with nature*

2

*Peace is found
with ease*

3

*Mind gets
refreshed*

4

*Melts
stress away*

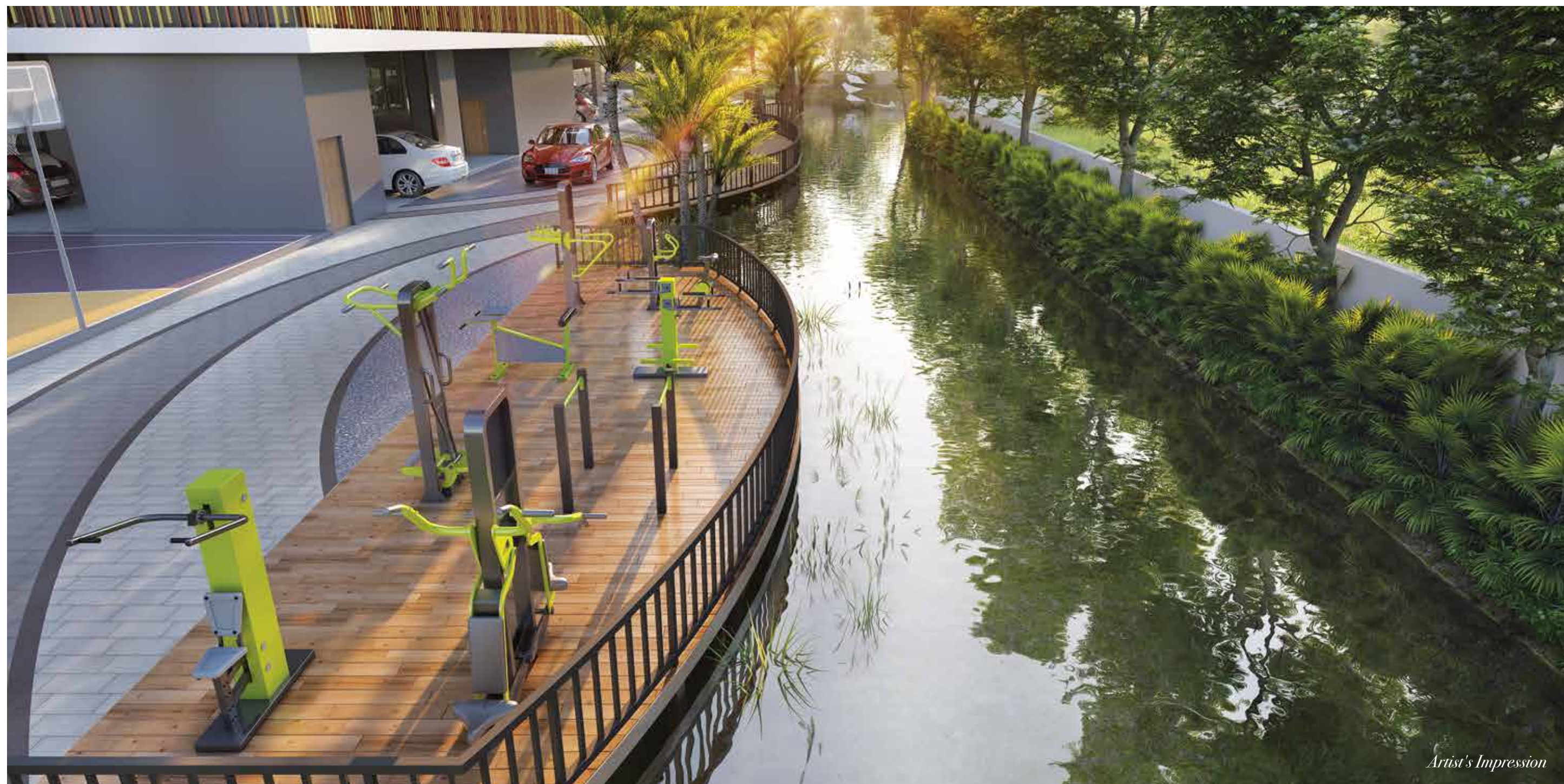
5

*Improves
focus*

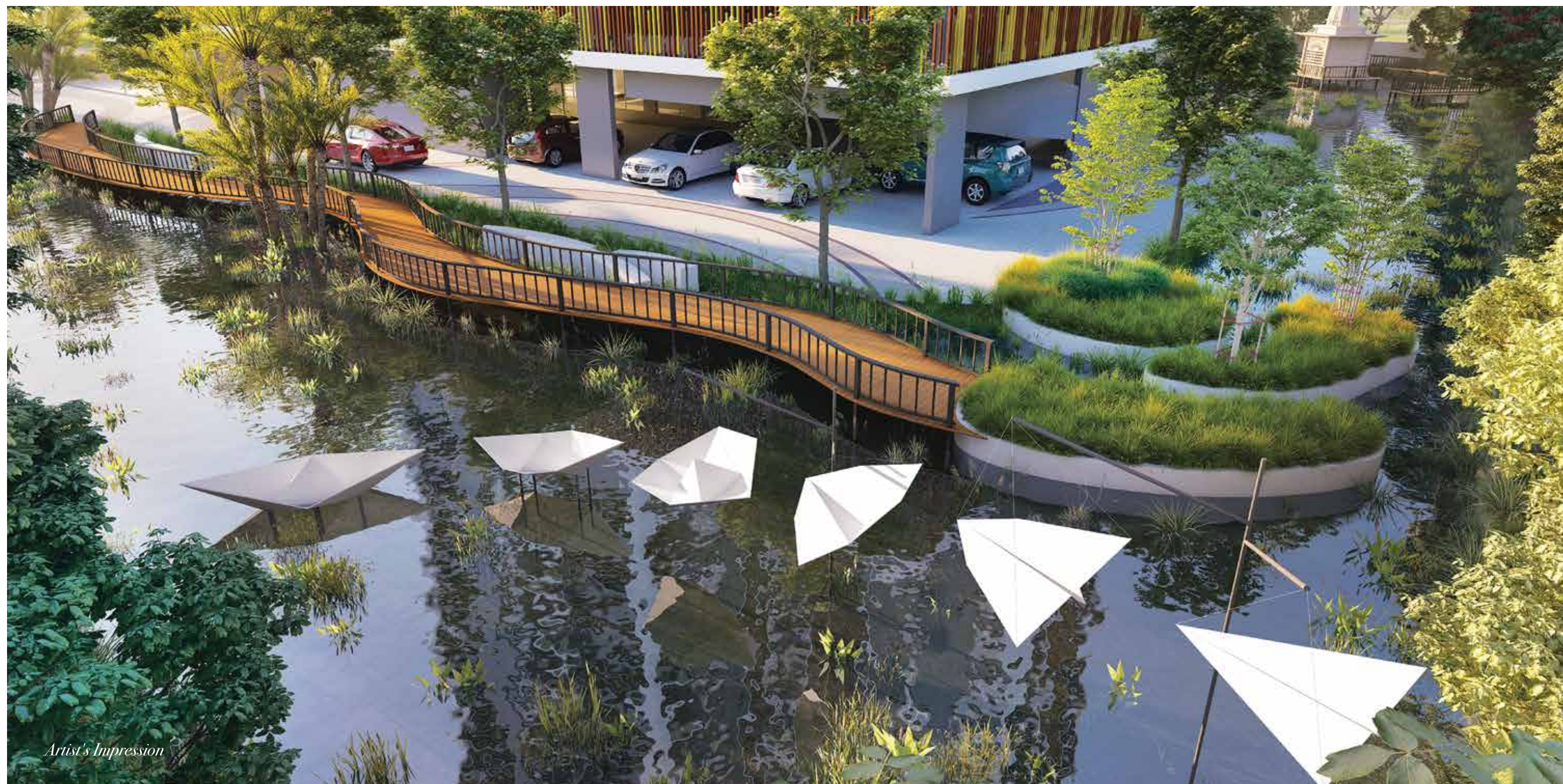


Relaxation will find new meaning while spending moments of anticipation at the fishing deck

Artist's Impression



Pump up the adrenaline quotient at the fitness zone



Soul-soothing water sculpture to rejuvenate your senses to the core



Serenity comes closer than ever at the waterside pathway

Artist's Impression

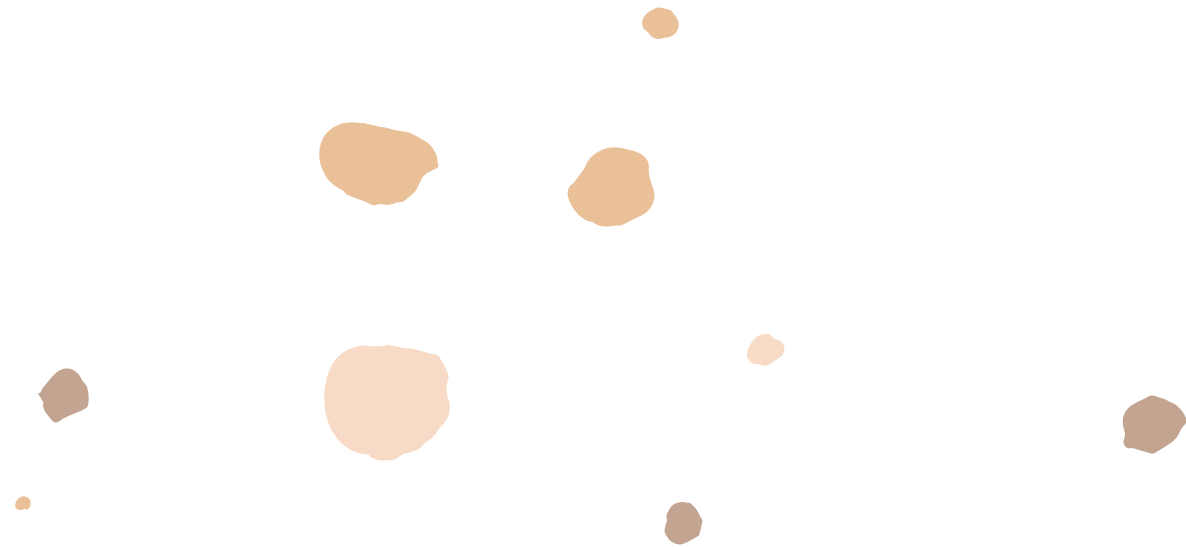


DISCOVER
NEW FORMS OF
GREEN EVERY DAY
BY THE WATER



*Your new home at Jeevika will see you surrounded
by nature on all sides, day in and day out. Ample greenery
like this in the heart of the city is a boon in itself.*





Kids' Play Area ~ *Multi-purpose Games Court* ~ *Green Lawn* ~ *Reflexology Pathway*
Amphitheatre ~ *Senior Seating* ~ *Stepped Planter* ~ *Feature Wall*
Green Island ~ *Yoga Deck* ~ *Peripheral Greenery*





The playground will be the arena for spirited pursuit of fun and fitness



The multi-purpose games court aids you in all your sporting needs

Artist's Impression

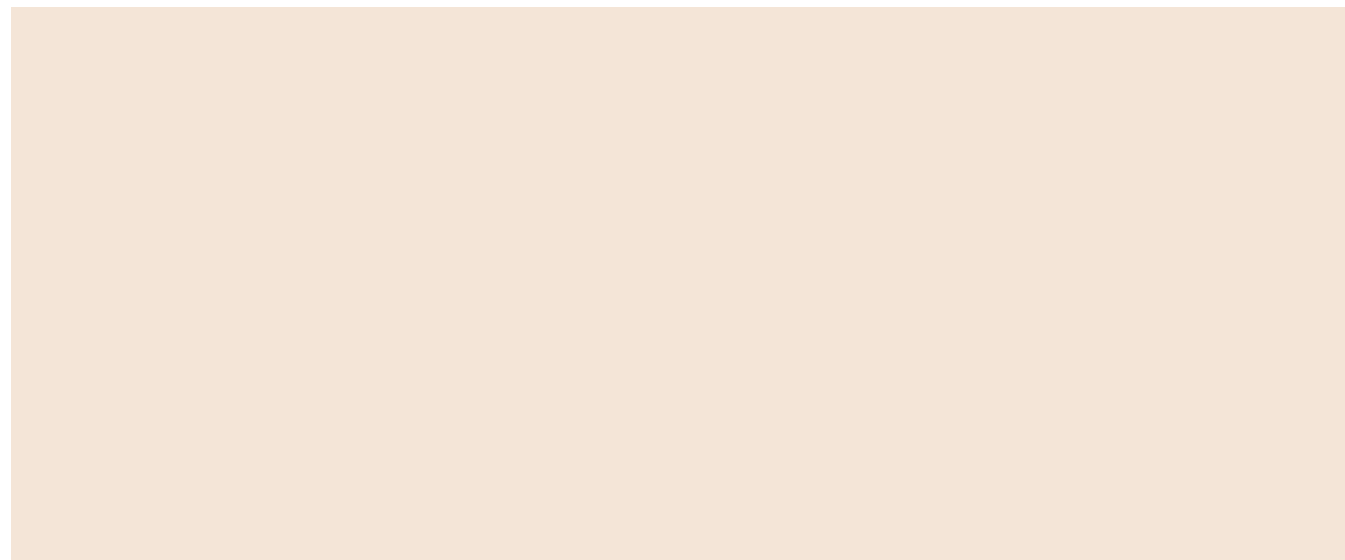
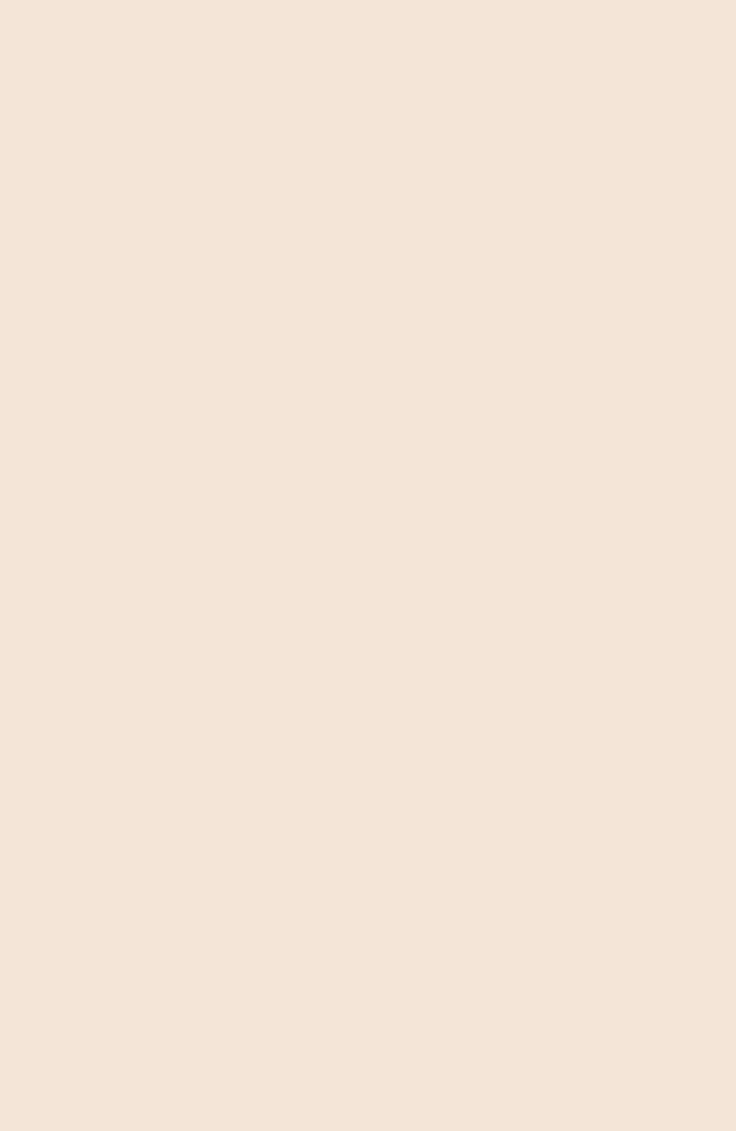




LEISURE AS
LUXURIOUS AS
IF EVERYDAY IS MEANT
FOR REVELRY



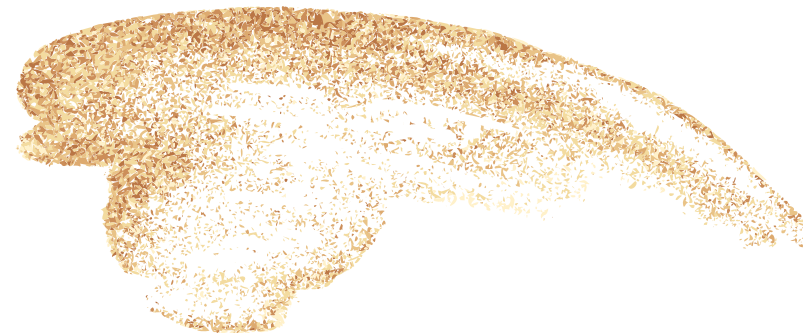
*Recreation becomes
your everyday companion at Jeevika.*





Temperature-controlled Swimming Pool ~ *Kids' Play Room* ~ *Indoor Games Room* ~ *Library cum Business Centre*

Banquet Hall ~ *Miniplex Home Theatre* ~ *Indoor Gymnasium* ~ *Yoga cum Meditation cum Zumba Room*





Unwind and relax at your serene blue temperature-controlled swimming pool

Artist's Impression



Artist's Impression

Tiny tots will tell you all about their favourite space in the kids' play room



Artist's Impression

Cheers and celebrations will surround you with every victory at the indoor games room



CREATIVE

Professionalism within the comfort of your own home-space at the library cum business centre

Artist's Impression



Get-togethers get a new meaning when you rejoice at the banquet hall

Artist's Impression

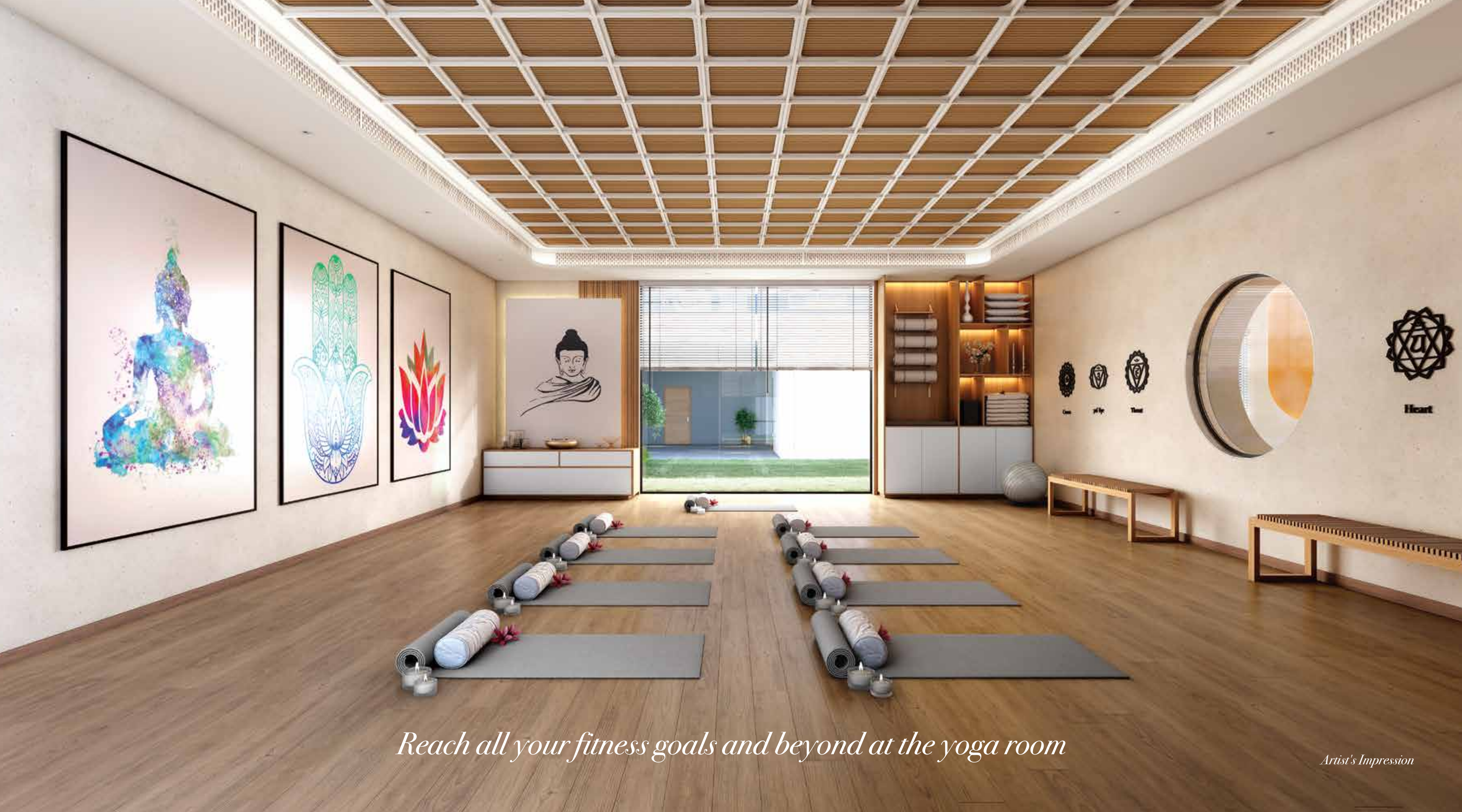


Artist's Impression

Enjoy your favourite movies at the miniplex home theatre



Your health quotient stays on-point at the gymnasium



Reach all your fitness goals and beyond at the yoga room

Artist's Impression

ROUNDING UP THE ESSENTIAL TENETS OF YOUR HOMES BY THE WATER



1

*All the units are 3-sides-open
and fully open in the
South direction*

2

*Spacious double-height
Balconies in every alternate unit
(A minimum of 100 sq. ft)*

3

*Each unit will have
an Individual Servant Quarter
adjacent to their units with
Private Toilet with each
Servant Quarter*

4

*Simultaneous
access to both VIP Road
& Jessore Road*

5

*37 kottahs of natural waterbody adding
serenity and offering scope for
beautification and meaningful use
of open space*

6

*IGBC Platinum Pre-certified Green Building
(All the apartments will be fully
Air-conditioned with VRV
System in place)*



PRE-CERTIFICATION MILESTONE GREEN APPROVED

Jeevika is proud to be North Kolkata's first IGBC Green Home after attaining the pre-certified platinum certification



TEAM



With more than a decade of experience, Auricas is bringing new-age norms in the real estate industry, driven ahead with future-forward ideas and design, and the leadership of Sanjay Puri. The Group is now culminating these design ideas in a new project, after having created many over the past two decades and more. With Jade & Nevada. The Group has revisited the age-old promises of on-time delivery, incredible team effort, thoughtfulness, and a focus on prioritising the needs of the customer. Auricas creates every project with a golden eye for detail, and transforms spaces into lifestyle experience centres for its residents.



Natural Group has achieved building quality residencies and commercial landmark developments, with a number of projects currently in the pipeline. The Group takes pride to be associated with the B. P. Poddar group which pioneered the undertaking PPP ventures with BDA (Burdwan Development Authority) and Dum Dum Municipality in several infrastructural and township projects. The Group is now diversifying the presence to several cities in Eastern India. Natural Group has also engaged itself in backward integration and has the distributorship of Indian Oil in the State of Rajasthan.

Architect, Interior &
Landscape Consultant



Mass & Void Architect, Interior & Landscape Consulting is one of the most established Architectural & Interior practices delivering projects in various parts of Eastern & North East India, including West Bengal, Jharkhand, Nepal, Assam & several parts of Central, Western & Southern India. Within the last 10 years, Mass & Void has successfully completed more than 50 projects including Residential, Commercial, Hospitality, Educational & Industrial. Presently, Mass & Void Architect, Interior & Landscape Consulting is an integral part of more than 100 undergoing projects in the Design & Constructional stages.

Brand Consultant

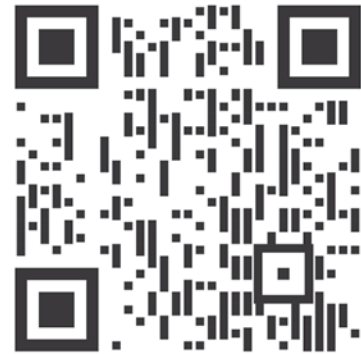


Bibhor Singhania & Banibrata Goswami have been working with the real estate pioneers across the nation, and serving more than 125 clients and 350 real estate projects across West Bengal, Maharashtra, Chhattisgarh, Assam, Bihar, Odisha, Karnataka, Uttar Pradesh & many more states. Be the Bee is one of India's most promising advertising agencies, with a bunch of innovative ideators and strategic thinkers. We aim to serve the most creative as well as effective branding approaches, that touch all the verticals of marketing and create a distinguished position with the help of outstanding aesthetic skills for each real estate project.



*Come,
live a phenomenal life enjoying*

LUXURY BY WATERSIDE



Scan for walkthrough

A Project by



Citysquare Real Estates Pvt. Ltd.
South City Business Park
Unit No. 303, 3rd Floor
770 Anandapur, Kolkata - 700107

www.auricas.in
info@auricas.in
For Enquiry: 90888 33111

Site Address
594/1 S K Deb Road
Kolkata - 700048

RERA No.: WBRERA/P/NOR/2025/002986 | www.rera.wb.gov.in

Disclaimer: The sizes / shapes / positions of openings, ducts, balconies, and landscape are subject to change. The room sizes indicated are structural sizes, and actual sizes may vary due to finishes. Areas mentioned are subject to change after finalisation of services and structural design. The furniture shown in the illustration is only indicative. All plans, specifications, artistic renderings, and images as shown in this brochure are only indicative and are subject to change as may be decided by the company or directed by any competent authority in the best interests of the development. Soft furnishings, furniture, and gadgets do not form part of the offering. This document is conceptual and not a legal offering by the company, and is to be used for general information only. Any interested party should independently verify all the information, including designs, plans, specifications, facilities, features, payment schedules, terms of sale, etc., with the company prior to concluding any decision to buy in any of the towers. The user of the brochure confirms that he / she has not solely relied on this information to make any booking / purchase in any of the towers. Nothing on the brochure should be misconstrued as advertising, marketing, booking, selling, an offer for sale, or an offer for sale or invitation to purchase a unit in any project by the company.